

Evaluation of Long-Term Impacts in Life Cycle Assessment

R. Frischknecht, ESU-services

Goal and Overview:
Time aspects covered
in the morning presentations

22nd LCA Forum
May 7, 2004
ETH Zürich

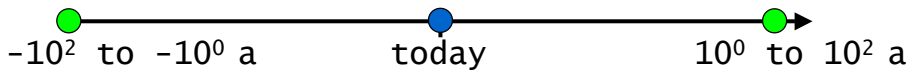
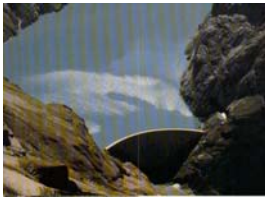
Goal of this LCA Forum

- Full picture of time aspects in both LCI and LCIA
- Discussion on pros and cons of a temporally differentiated weighting
- Input to LCIA method development

Time within the product system

- Industrial processes were required in the past and will be required in the future:

No presentation

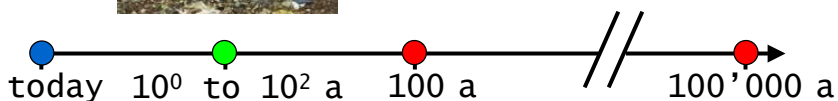


Time within processes

- Industrial processes may emit a long time after they were required:

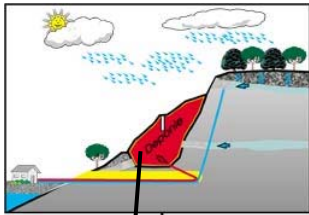


Gabor Doka:
Modelling of long-term
emissions in LCIs of
landfills

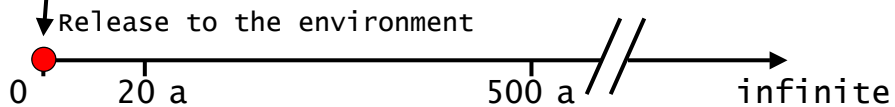


Time aspects in impact potential assessment

- Impact potential of an emitted substance may vary with the time horizon considered:

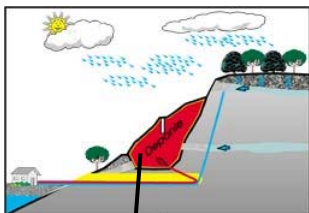


Mark Huijbregts:
Time horizon dependency in toxicity potentials



Time aspects in impact pathways

- Time-lags in fate and exposure, effect and damage of an emitted substance:



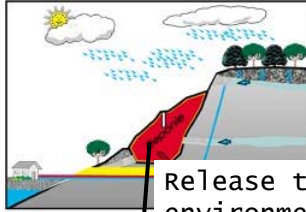
Patrick Hofstetter,
Ruedi Müller-wenk:
LCA impact pathways and
time-lags, an overview



Temporally differentiated weighting

Stefanie Hellweg:
Discounting in LCA

Anton Leist:
Assessment of long-term
damages to the environment:
ethical questions



Release to the environment

